

PRIVATE OFFICE FOR LEASE

556 HERALD STREET | VICTORIA, B.C.



OPPORTUNITY



Elevate your professional presence and establish your office in the heart of downtown Victoria with the opportunity to lease a private corner office within the historic Herald Building. This shared commercial unit offers an ideal blend of character and functionality, providing tenants and their clients with access to a range of shared amenities. These include a fully equipped boardroom for meetings and presentations, a welcoming waiting area, a communal copier room and shared washroom and kitchenette for added convenience. Situated in Victoria's vibrant downtown core, this prime location offers unmatched convenience with nearby transportation links, neighbouring parking options, and a diverse selection of dining, entertainment, and retail destinations just steps away.

UNIT DETAILS

UNIT "C"

UNIT SIZE:	130 SF (approx)
AVAILABLE:	March 1, 2025
NET RENT:	\$750 / month (Gross)
LEASE TYPE:	Month to Month



Shared Boardroom

FEATURES

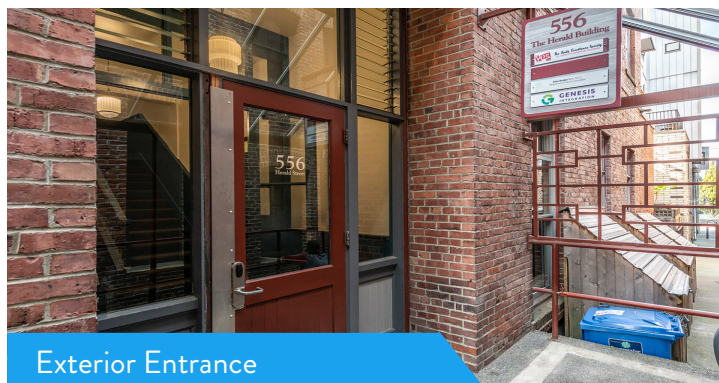
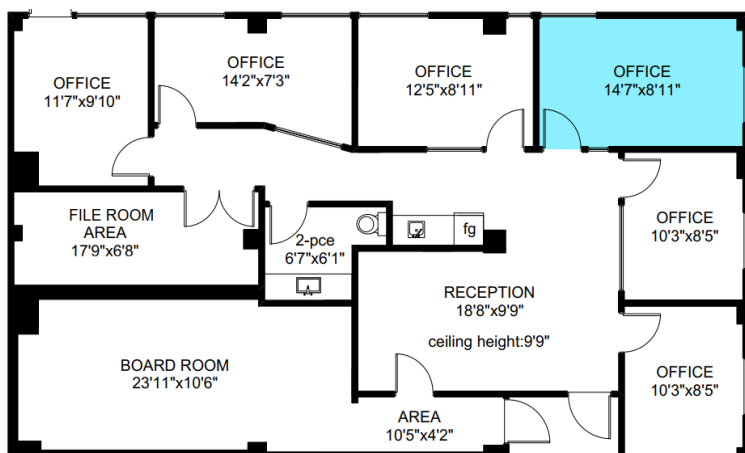
- Fully furnished, with an executive desk provided
- High-speed internet and utilities included
- Access to shared boardroom facilities
- Shared washroom and kitchenette within the premise
- Access to a common-area copier room and equipment
- Communal office cleaning included
- Professionally managed building
- Private, locked mailbox provided
- Access to shared bike storage



Shared Washroom



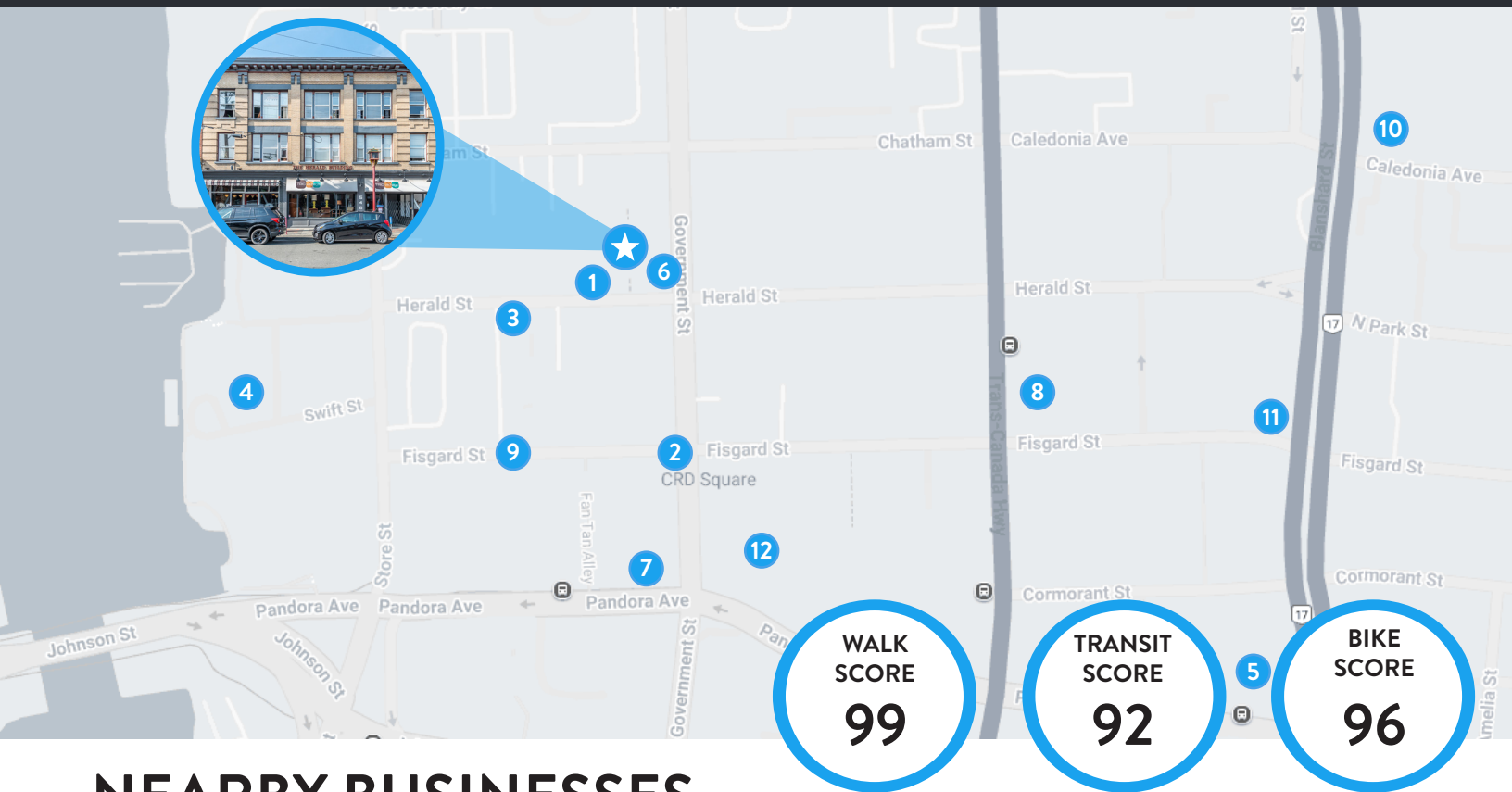
Entrance Lobby



Exterior Entrance

THE LOCATION

Discover the ideal setting for your professional office in the heart of vibrant downtown Victoria. Situated in the historic Herald Building, this shared commercial space seamlessly combines timeless charm with the dynamic energy of a thriving business district. Tenants will enjoy a unique opportunity to become part of a flourishing professional community, surrounded by an abundance of amenities and services just steps away. With top-rated walk and bike scores, excellent transit accessibility, and numerous parking options in the surrounding area, this location is truly unmatched. Onsite bike storage adds to the convenience, making it a perfect choice for professionals seeking a well-connected and inspiring workspace.



NEARBY BUSINESSES

- | | | |
|-----------------------------|--------------------------|----------------------------------|
| 1 Jam Cafe | 5 Tacofino Victoria | 9 The Bubble Tea Place |
| 2 Victoria's Chinatown | 6 End Dive Restaurant | 10 Save-On-Foods Memorial Centre |
| 3 Union Pacific Coffee Shop | 7 Habit Coffee | 11 Pvolve Victoria |
| 4 CRAFT Beer Market | 8 Victoria Public Market | 12 Centennial Square |

CONTACT

LEIGHA RUSSELL

Real Estate Associate - Devon Properties
P: 250.595.7000 | M: 250.812.1617
lrussell@devonproperties.com

Devon
PROPERTIES

This disclaimer shall apply to Devon Properties Limited and to all other divisions of the Corporation; to include all employees and independent contractors ("Devon Properties"). The information set out herein, including, without limitation, any projections, images, opinions, assumptions and estimates obtained from third parties (the "Information") has not been verified by Devon Properties, and Devon Properties does not represent, warrant or guarantee the accuracy, correctness and completeness of the Information. Devon Properties does not accept or assume any responsibility or liability, direct or consequential, for the Information or the recipient's reliance upon the Information. The recipient of the Information should take such steps as the recipient may deem necessary to verify the Information prior to placing any reliance upon the Information. The Information may change and any property described in the Information may be withdrawn from the market at any time without notice or obligation to the recipient from Devon Properties. Devon Properties and the Devon Properties logo are the service marks of Devon Properties Limited and/or its allied or related companies in other countries. All other marks displayed on this document are the property of their respective owners. All Rights Reserved. Mapping Sources: Google Earth.