

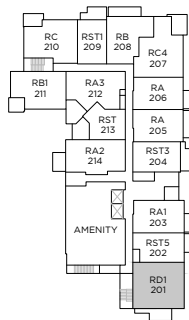
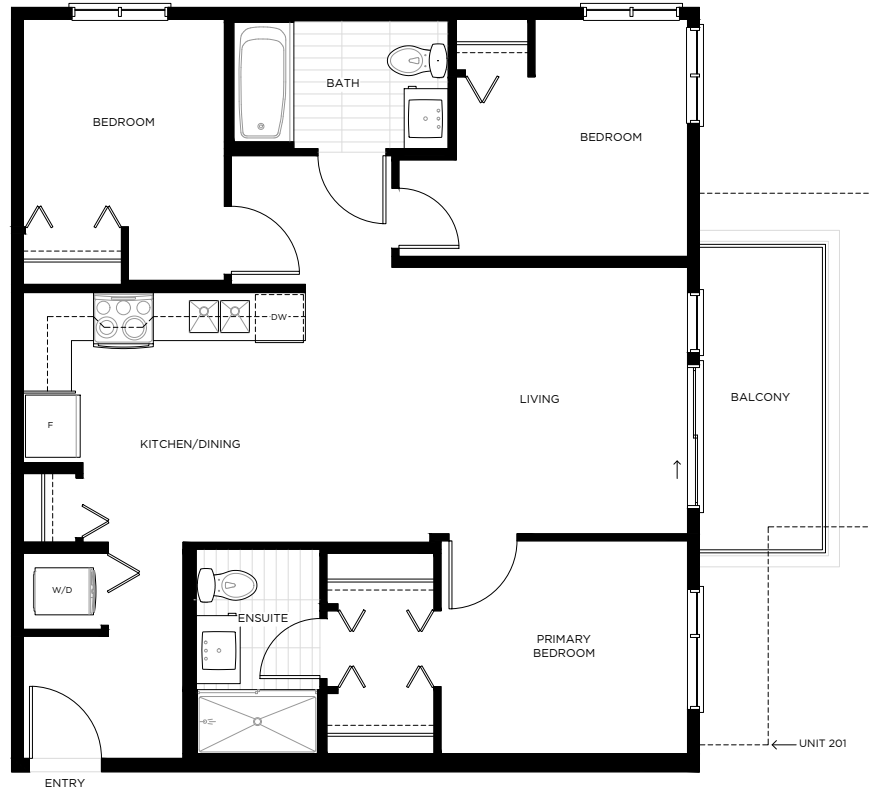
PLAN TYPE: RD1

3 BED, 2 BATH

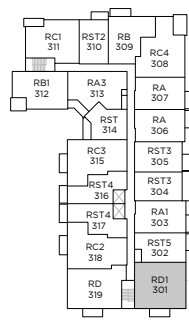
INTERIOR: 927 - SF
 EXTERIOR: 63 - SF
 TOTAL: 990 - SF

RED SOL

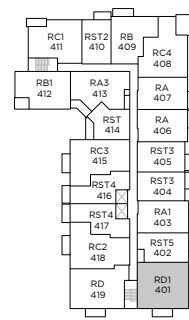
750 ROBINSON STREET,
 COQUITLAM, BC



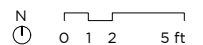
LEVEL 2



LEVEL 3



LEVEL 4-5-6-7



Sizes and dimensions are approximate, actual may vary. Patio layouts and conditions may vary. The developer reserves the right to make changes and modifications to the information contained herein without prior notice. E.&O.E.